



EMPOWERING ENTREPRENEURS. TRANSFORMING POULTRY.

₹200
CRORE
COMMITMENT

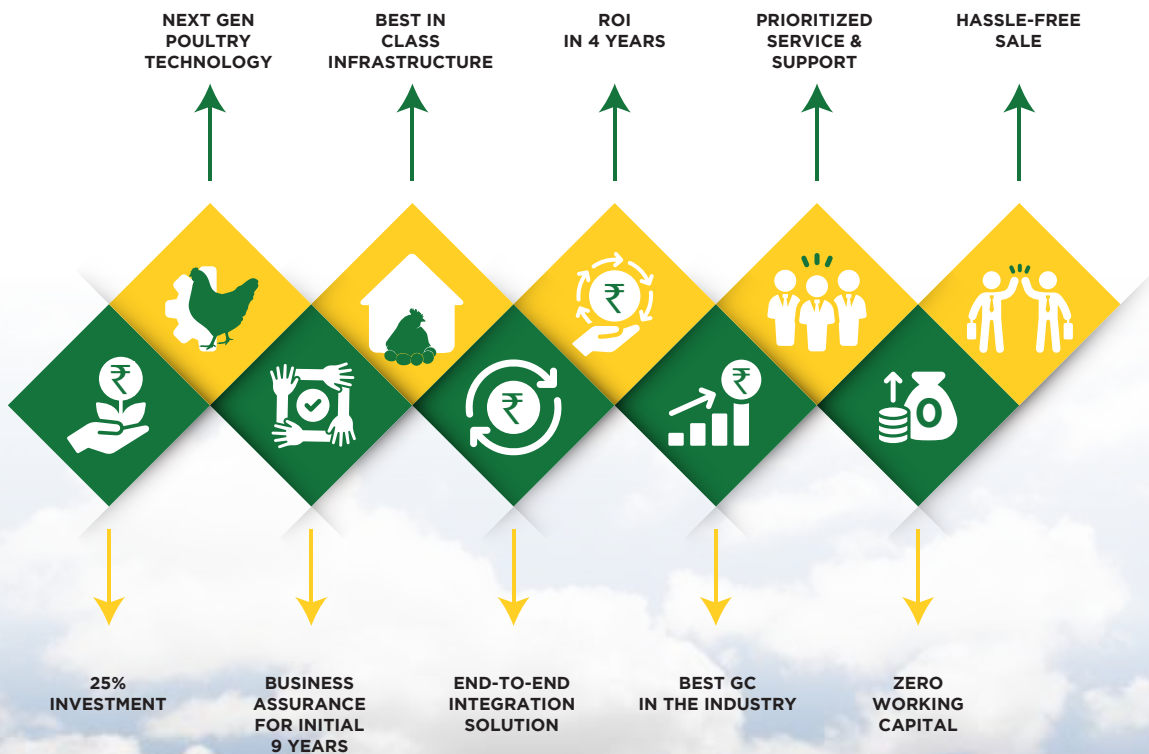
25%
FINANCIAL
SUPPORT **

ABOUT IB GROUP

IB Group, headquartered in Chhattisgarh's Rajnandgaon district has been synonymous with excellence and poultry since 1985. Our Founder and Managing Director Mr. Bahadur Ali is a dynamic visionary and is popularly known as the 'Father of Modern Poultry in India'. The group is a diversified agribusiness conglomerate with presence in poultry, livestock feed and edible oil, and has clocked a turnover of ₹9,000 crores by 2023 (revenue figures). The group has a strong presence in 26 states and through its strategic partnerships with 25,000+ farmers, dealer network, and a dedicated team of 15,000+ employees, we've earned our place as India's 'Integrated Protein Leader'. IB Group has been a pioneer in driving innovation and transforming poultry farming with sustainable practices and cutting-edge technology.

ABOUT PARIVARTAN Gen Nxt

IB Group's initiative - Parivartan Gen Nxt is a revolutionary innovation with a strong focus on encouraging startups and young Indians to venture into broiler farming using technology-driven methods, IB Group commits to supporting them with **25%** of the total expenditure in acquiring EC infrastructure to kickstart their journey and providing comprehensive assistance throughout the association.



	EC HOUSE TYPES	EC HOUSE SIZE	BIRD CAPACITY	PER BIRD COST (₹)*	TOTAL COST	ABW/BIRD (KG)***	MIN. GC/KG (₹)****	COMMITTED MIN. BATCHES PER YR	ANNUAL EARNINGS	APPROX. PAYBACK IN YEARS
1	HOUSE TYPE-1	45'X330'	21,808	475/-	1,03,58,800	2	13	6	34,02,048	3.0
2	HOUSE TYPE-2	45'X270'	17,654	528/-	93,21,312	2	13	6	27,54,024	3.4

Prices are valid until 31st March 2024 and are exclusive of taxes, erection, installation, civil work, land cost & and transportation charges, subject to any revision from the company.

** The Payback Period shown above is Illustrative for Shed and Equipments only.

*** ABW (Average Body Weight) as per industry average norms.

**** GC (Growing Charges) will be revised post-completion of every 8 batches as per industry standards.

REDEFINING INNOVATION, LAUNCHING PARIVARTAN Gen Next 2.0

SHED SIZE 400*45 OF CAPACITY 26500

HIGHEST EVER CAPACITY

BIG RETURN

LOADED WITH ULTRA-MODERN EQUIPMENTS

TERMS & CONDITIONS FOR INVESTORS

1. Agreement between the Investor and ABIS Exports (India) Pvt. Ltd. (AEPL), for Parivartan Gen Nxt is compulsory and non-negotiable for the first 9 years and extendable till 15 years.
2. 25% of the project amount for order confirmation within 30 days of LOI, 2nd & final installment of 25% each within 60 days & 90 days respectively from the date of LOI.
3. 25% of the infra cost (shed + equipments) will be funded by the AEPL. Repayment to be done by an investor for initial 5 years in 30 Batches.
4. In case of a change in the above rates, an intimation of 30 days will be given to investors to deposit a 100% balance payment for the orders booked at the above rate.
5. The investor shall place the final order for the shed and equipment within 90 days of depositing the final installment.
6. Failure to deposit payment within the scheduled time, new rates will be applicable for the same orders booked.
7. The technical team will visit the site before the dispatch of material for inspection and readiness.
8. All basic civil work on site is to be done by the investor as per the drawings provided by AEPL.
9. Installation of the EC House building should be done within 60 working days, from the date of site inspection and material delivery at the site.
10. Installation and erection of the shed and the equipment will be done by the company's authorized vendor only.
11. Technical training to be provided to the investor and its staff at HO.
12. A trained farm supervisor will be placed at the farm by AEPL to manage day-to-day operations for the 1st 2 batches without any cost to the investor.



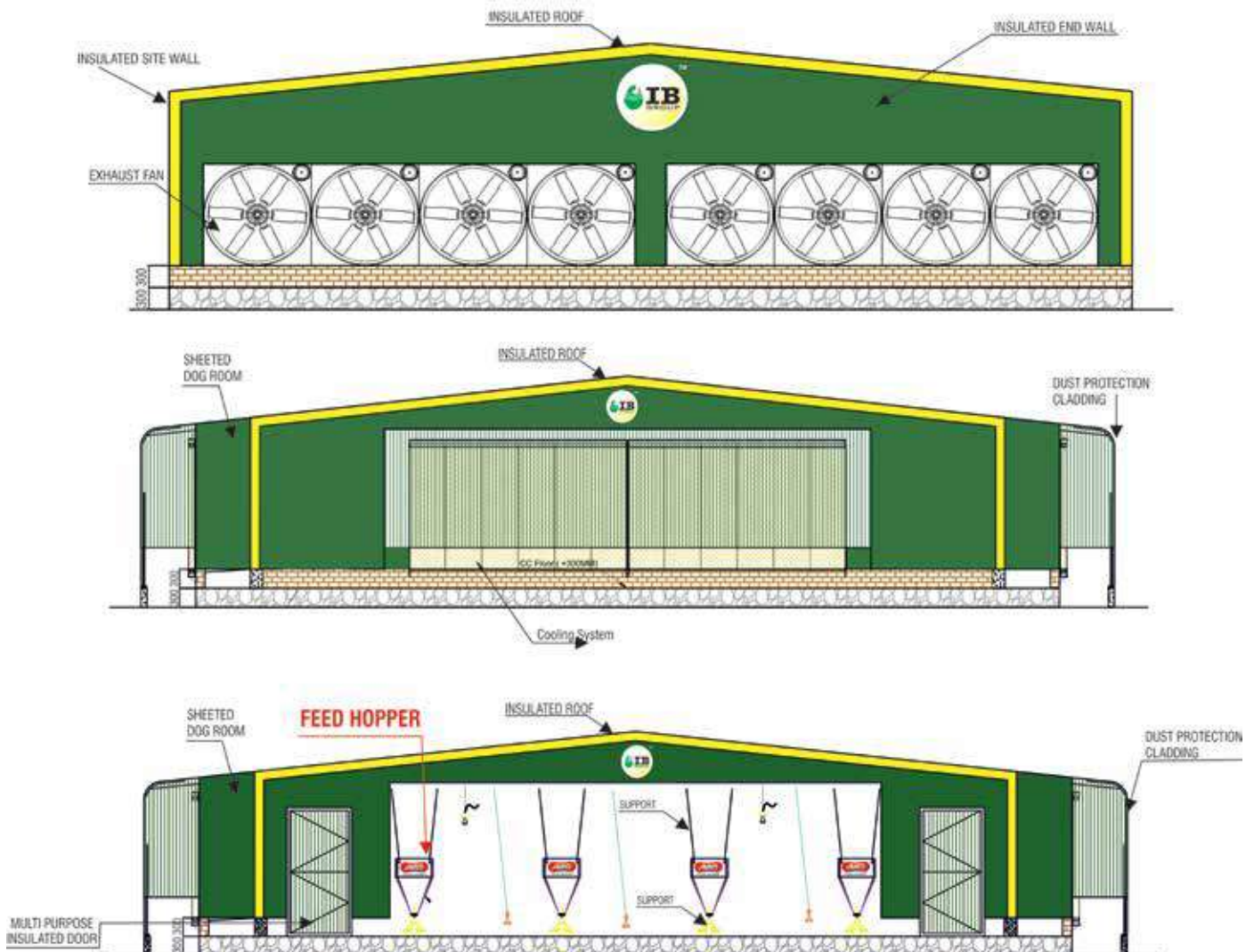
We, at IB group, are changing the ecosystem of poultry in India with Environment Controlled Poultry Houses and truly impacting the lives of poultry farmers by partnering and empowering them with cutting-edge infrastructure and automated machinery. I am absolutely happy to share that we are the only Indian company to offer end-to-end EC House Solutions to our poultry farmers.



BAHADUR ALI
Founder & MD, IB Group



PHYSICAL SPECIFICATIONS OF EC HOUSE BUILDING SHED



- ❑ Designed Load-Wind Velocity 140 km/hr, Roof Live Load 0.57 kN/m
- ❑ All Sheeting material Pre-Painted Galvelume. 0.5 mm TCT
- ❑ Roof Sheeting from both sides (inside and outside)
- ❑ Gable end cladding from both sides (excluding fan and cooling pad opening)
- ❑ Wall and Gable end insulation with 100 kg density, 50 mm
- ❑ Thickness rigid rock wool slab. Roof Purlin and Wall Girts with GI Cold Formed

EC HOUSE EQUIPMENTS OFFERED IN THE PLAN



FEEDING SYSTEM

Sensor-based Automatic Feed Supply.
Easy Access of Feed to Bird.
No Feed Wastage.



DRINKING SYSTEM

Eliminates Water Spillage and Wastage.
Fresh and Hygienic Water Delivery.
Easy to Clean & Maintain.

CLIMATE CONTROL EQUIPMENTS



COOLING PAD

Evaporative Cooling Process.
Maintains Optimal Temperature and Humidity.
Prevents Heat Stress among the Birds.



VENTILATION FAN

Prevents Heat Stress for the Birds.
Has Low Noise and Vibration.
Highest Air Speed Delivery.



DIESEL BROODER

Cost-effective Heating.
Automatic Temperature Control for Brooding.
Portable Design.



PANEL

Automated Control of Temperature, Ventilation,
and Feed Distribution, Lighting.
Easy to Operate and Monitor.
Digital Volt & Amper Display.



CIRCULATION FAN

Improves Air Distribution.
Maintains Uniform Temperature.
Reduces Condensation and Ammonia Levels.



GAS BROODER

Efficient and Economical.
Reliable and Easy to Operate.
High and Consistent Heat Output.



CONTROLLER

Real-time and Remote Data Access.
Graphical Data Representation.
User Friendly Operations.

ELECTRICAL SUPPORT EQUIPMENTS



GENERATOR

30 kVA Capacity.
Auto Changeover Uninterrupted Power Supply
for smooth Operations.
Fuel Efficient.



STABILIZER

Efficient Voltage Regulation.
Equipment Protection.
Reduces Downtime.



AUTO CHANGEOVER

Automatic Switchover to an Alternative Power Source.
Minimizes Downtime.
reduces the need for constant monitoring
and manual intervention.



ELECTRICAL WIRING & PVC ITEM

Safe and Durable.
Reduced Risk of Electrical Failures.
Ease of Maintenance.

ADDITIONAL EQUIPMENTS



VFD SYSTEM

Precise Ventilation Control.
Energy Efficiency.
Improves Air Quality Without Heat Wastage.



BIRD PARTITIONS

Effective Space and Equipment Utilization
Easy to Clean.
Behavioral Management.
Highly Durable.



BROODING CURTAIN

Temperature Control.
Energy Efficiency.
Chicks' Welfare.



FOGGER LINE

Temperature Gradient is Reduced.
Heat Stress Reduction.
Precise Environmental Control.



UPS 1 KVA

Power Continuity.
Equipment Protection.
Timely Alerts.



BIRD WEIGHING MACHINE & PITARA

Precision Weight Measurement.
Health Monitoring.
Performance Evaluation.
Easy Handling of Birds.

ADDITIONAL



UNDERGROUND SILO

3 Tone Capacity.
High Strength and Durability.
Complete Automation.



ROTATIONAL CAMERAS

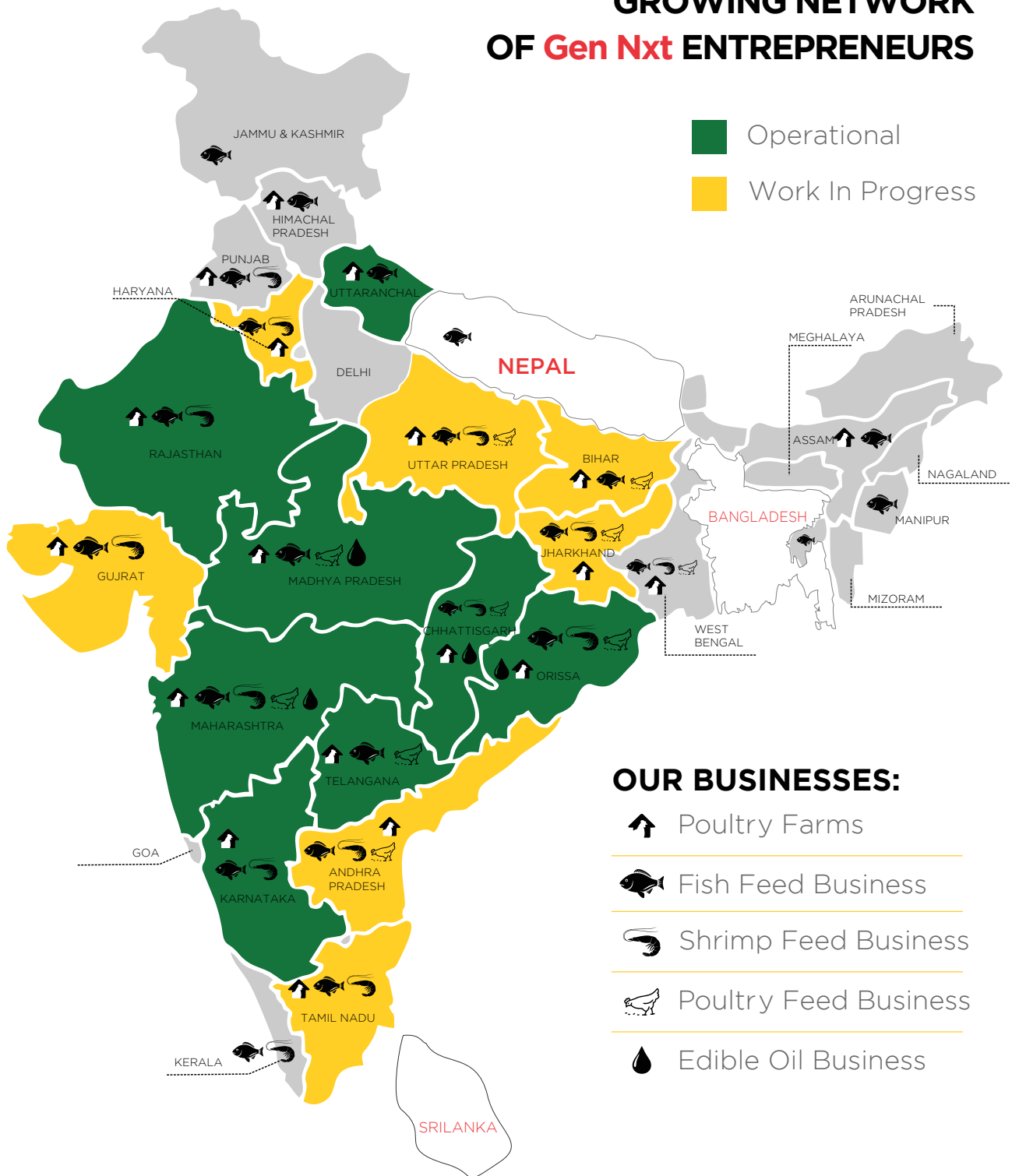
Remote Monitoring.
Enhances Security.
Improves Management.



AIR INLETS

Aerodynamically Designed.
Proper Air Distribution and Direction of Fresh Air.
Prevent Direct Draft of Cold air on to the Birds.

JOIN THE GROWING NETWORK OF Gen Nxt ENTREPRENEURS



200 +
PARTNERS

➔ 43.6 LAKH
BIRDS CAPACITY

➔ 29 LAKH SQ. FT
FLOOR SPACE

TESTIMONIALS

“ I come from a different business background. I came to know about Project Gen Nxt and financial support extended by IB Group and that's how I entered poultry with 2 Sheds . I am happy with the financial returns and being a part of the IB Family and am planning to expand further. ”

Amit Panda , Odisha

“ IB group has not only introduced me to the ultra modern way of Poultry but also to the fastest growing Protein Industry of India. The Company Supervisor helped me to have consistent performance and profit in every batch. ”

Sada Shiva , Karnataka



SALES & SERVICE
HELP DESK
FOR PARIVARTAN FARMERS
76102 55555

TO KNOW MORE:



ABIS EXPORTS (INDIA) PVT. LTD.

IB Group Corporate House, Indamara, Rajnandgaon (C.G.) - 491 441
+91 91091 12121 | parivartannxtgen@ibgroup.co.in | www.ibgroup.co.in/parivartan-next-gen